

Newstead Hunningley Academy Newsletter 27.02.2026

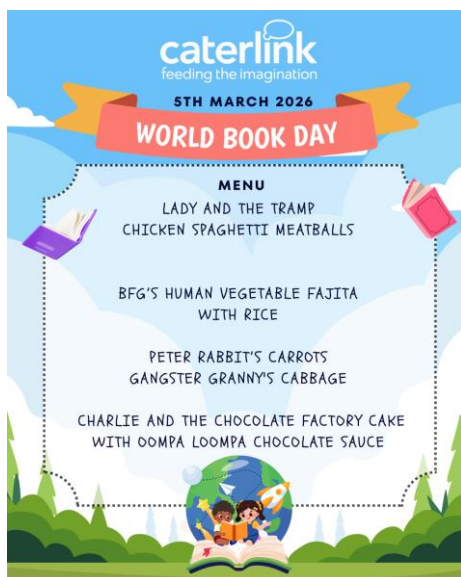
Welcome Back to the start of the second half of the Spring term. It's already looking very busy! The children were greeted with a very special surprise this week when an incubator and some eggs arrived! We have loved finding out about life cycles and welcoming some chicks to our classrooms.



Parent Voice

Everyone should have received an email and letter regarding the parent survey. We would be grateful if you could take a few moments to complete this survey. If you have not received this, please let the office know.

Change to Upcoming Menu



Hello and Welcome

This week we have welcomed Bridget to the team as a Lunchtime Support Assistant. Bridget has previously been a Passenger Support Assistant and knows some of our children. AnaMaria has also joined us as a permanent member of our Teaching Assistant Team, having already worked with us as a temporary member of staff. We are delighted to have them as part of the Hunningley Family.

Advice and guidance

To find out more about when to keep your child off school, search for health protection in schools or scan the QR code or visit

<https://qrco.de/minfec>





Hive 1

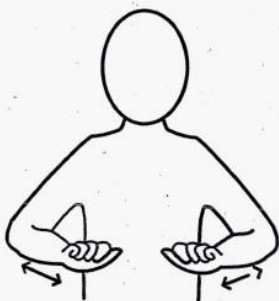
Our first week back has been full of excitement! We have loved watching the eggs hatch and are busy taking care of our chicks.

In English we have been writing a Chick Diary and recording our daily observations we have learnt some new vocabulary to help us to do this.

We have also been learning about the Chinese New Year Celebrations and finding out which lunar year we were born in we have a mixture of goats, monkeys, roosters and a dog. On Thursday we enjoyed some food tasting. The noodles, spicy dipping sauces and prawn crackers were all a big hit.

Some of us are continuing with our swimming lessons and are very proud of the progress our swimmers are making.

Sign of the Month



Chicken

Hive 2

We have had a fantastic first week back. The children have been fascinated watching the eggs hatch and have loved helping to name the chicks. These special visitors will form the basis of much of our learning over the next couple of weeks. In Maths, we began exploring the concept of *more and less* using practical resources and real-life objects. In Phonics and Reading, we revisited grapheme recognition and practised oral blending to build confidence when decoding words. During Writing sessions, we focused on letter formation through fun sensory activities to strengthen fine motor skills. In our Topic learning, we launched our Science work on farm animals.. It has been a busy and positive start to the half term!

Upcoming Diary Dates

- 5th March – World Book Day
- 18th March – Waterton's Got Talent
- 23rd March – Parents Evening
- 26th March – Parent Easter Event
- 27th March Term Ends
- 13th April- Back to School





THE CLIMB



At The South Family Hub

PARENTS/CARERS SEND SUPPORT GROUP

For parents/carers who are supporting a child or young person with Special Educational Needs, disabilities or mental health problem to include:

ANXIETY
LOW MOOD
SELF HARM

SLEEP PROBLEMS
SUICIDAL THOUGHTS
EMOTIONAL DIFFICULTIES

We hold monthly meetings for parents/carers to come together to share their experiences, as well as gaining further information and support.

The aim of this group is help you feel that you are not alone in this climb to get the help and support your child needs.

Come along and meet parents/carers in similar situations. There will be a fantastic selection of:

**Practical tips to help you
& your child**

Guest speakers from a range o services

Chance to talk

Lots of tea, coffee & biscuits!



NO NEED TO
BOOK
PLEASE COME &
DROP IN



For more information contact Compass Be on
 info.barnsleyMHST@COMPASS-UK.ORG





THE SEN CLIMB



PARENTS/CARERS SUPPORT GROUP

Meeting Dates

THURSDAYS 9:45AM – 12PM

2026 Dates

22nd January

26th February

26th March

23rd April

28th May

25th June

23rd July

27th August

24th September

22nd October

26th November



THE SESSIONS WILL TAKE PLACE AT:

South Family Hub
c/o Wombwell IKIC Hub,
Barnsley Road,
Wombwell,
Barnsley,
S73 8HT



For more information contact Compass Be on



info.barnsleyMHST@COMPASS-UK.ORG

**NO NEED TO
BOOK
PLEASE COME &
DROP IN**





THE CLIMB

PARENTS/CARERS SUPPORT GROUP



For parents/carers who are supporting a child or young person with any kind of emotional or mental health problem to include:

**ANXIETY
LOW MOOD
SELF HARM**

**SLEEP PROBLEMS
SUICIDAL THOUGHTS
EMOTIONAL DIFFICULTIES**

We hold monthly meetings for parents/carers to come together to share their experiences, as well as gaining information and support.

The aim of this group is help you feel that you are not alone in this climb to get the help and support your child needs.

Come along and meet parents/carers in similar situations. There will be a fantastic selection of:

**Practical tips to help you
& your child**

Guest speakers

Chance to talk

Lots of tea, coffee & biscuits!



**NO NEED TO
BOOK
PLEASE COME &
DROP IN**



For more information contact Compass Be on

 info.barnsleyMHST@COMPASS-UK.ORG

**address:
HOME, Wellington House,
Market Street, Barnsley,
S70 1WA**



COMPASS BE

THE CLIMB

PARENTS/CARERS SUPPORT GROUP



Meeting Dates

THURSDAYS 9:45AM – 12PM

2026 Dates

5th February 2026

5th March 2026

2nd April 2026

7th May 2026

4th June 2026

2nd July 2026

3rd September 2026

1st October 2026

5th November 2026

3rd December 2026



NO NEED TO
BOOK
PLEASE COME &
DROP IN

**Address: HOME, Wellington
House, Market Street,
Barnsley, S70 1WA**



For more information contact Compass Be on



info.barnsleyMHST@COMPASS-UK.ORG