

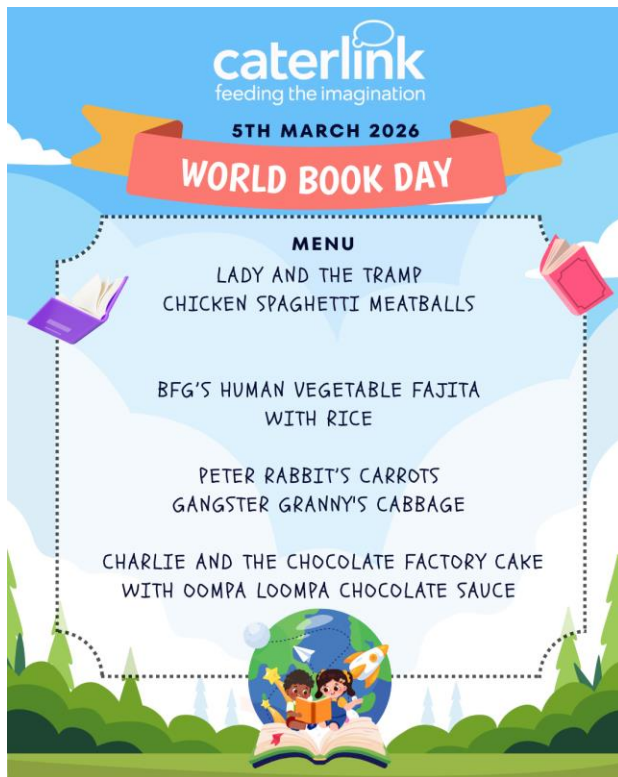


# Newstead Academy Newsletter 27.02.2026

## Upcoming Diary Dates

- 5<sup>th</sup> March – World Book Day
- 18<sup>th</sup> March – Waterton's Got Talent
- 23<sup>rd</sup> March – Parents Evening
- 26<sup>th</sup> March – Parent Event
- 27<sup>th</sup> March Term Ends
- 13<sup>th</sup> April Back to School

## Upcoming Menus



## Communication

Everyone should have received an email and letter regarding the parent survey. We would be grateful if you could take a few moments to complete this survey. If you have not received this, please let the office know.

## Parking

We kindly ask that you refrain from parking on the yellow school lines as it makes it difficult for our school buses to get in and out of the school entrance. Thank you.

### Advice and guidance

To find out more about when to keep your child off school, search for health protection in schools or scan the QR code or visit

<https://qrco.de/minfec>





## Hive 1

The children in Hive 1 have settled back into class beautifully after half term and it has been wonderful to see them so happy to be back with their friends and teachers. They have returned ready to learn and have been engaging enthusiastically in lots of fun and exciting activities. In Topic, we have launched our new learning with great excitement. In Art, the children have been exploring line drawing using a range of different materials, including whiteboards, chalkboards, large paper and even sand, to create a variety of lines and patterns. In Science, they thoroughly enjoyed investigating animals through a textured, animal-themed tuff tray, using different materials to represent animal features and habitats. We also had lots of fun in Computing, exploring cause-and-effect activities in the sensory room, where the children experimented with switches and interactive equipment to see how their actions created different responses. It has been a fantastic and positive start to the half term!

## Hive 2

This month in Hive 2, we have completed our learning on traditional tales, focusing on Goldilocks and the Three Bears. The children immersed themselves in the story by adding music to different parts, drawing wonderful character pictures, and building sentences using colourful semantics. It has been fantastic to see their creativity and confidence grow.

We have now begun our new topic all about animals! This week, we enjoyed reading *Walking Through the Jungle* by Julie Lacome. The children explored different animal soundscapes and had great fun identifying and discussing the sounds they could hear. We also sorted animals into simple habitats, including farm and jungle, helping us to understand where different animals live.

We are very excited to continue exploring the world of animals over the next few weeks and look forward to sharing more of our learning with you soon!

## Hive 3

Hive 3 have had a busy and productive month across the curriculum.

In Maths, we explored the properties of 2D and 3D shapes and enjoyed constructing our own 3D models. We have also started learning about angles, identifying them in shapes and in our environment.

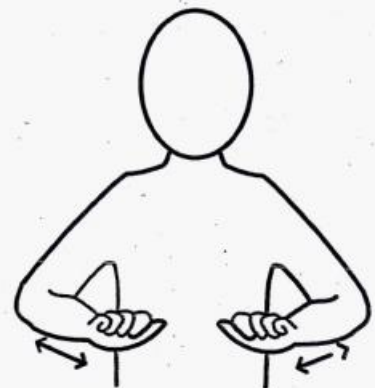
In Literacy, we studied *Peter the Great Pea Eater* and explored the features of newspaper reports. The children then planned and wrote their own reports based on the events of the story.

In Music, we developed our confidence through signing songs, singing in rounds, and practising call-and-response pieces.

In Art, we learned about Henri Matisse and created our own bold, colourful collages inspired by his style.

We have now begun our new topic on spring, where we are exploring simple poetry with a focus on rhyme and repetition. We look forward to sharing more of our learning as the term continues!

## Sign of the Month



Chicken





# THE CLIMB



At The South Family Hub

## PARENTS/CARERS SEND SUPPORT GROUP

For parents/carers who are supporting a child or young person with Special Educational Needs, disabilities or mental health problem to include:

**ANXIETY**  
**LOW MOOD**  
**SELF HARM**

**SLEEP PROBLEMS**  
**SUICIDAL THOUGHTS**  
**EMOTIONAL DIFFICULTIES**

We hold monthly meetings for parents/carers to come together to share their experiences, as well as gaining further information and support.

The aim of this group is help you feel that you are not alone in this climb to get the help and support your child needs.

Come along and meet parents/carers in similar situations. There will be a fantastic selection of:

**Practical tips to help you  
& your child**

**Guest speakers from a range o services**

**Chance to talk**

**Lots of tea, coffee & biscuits!**



**NO NEED TO**  
**BOOK**  
**PLEASE COME &**  
**DROP IN**



For more information contact Compass Be on  
 [info.barnsleyMHST@COMPASS-UK.ORG](mailto:info.barnsleyMHST@COMPASS-UK.ORG)





# THE SEN CLIMB



## PARENTS/CARERS SUPPORT GROUP

### Meeting Dates

**THURSDAYS 9:45AM – 12PM**

#### 2026 Dates

22nd January

26th February

26th March

23rd April

28th May

25th June

23rd July

27th August

24th September

22nd October

26th November



THE SESSIONS WILL TAKE PLACE AT:

South Family Hub  
c/o Wombwell IKIC Hub,  
Barnsley Road,  
Wombwell,  
Barnsley,  
S73 8HT



For more information contact Compass Be on



[info.barnsleyMHST@COMPASS-UK.ORG](mailto:info.barnsleyMHST@COMPASS-UK.ORG)

**NO NEED TO  
BOOK  
PLEASE COME &  
DROP IN**





# THE CLIMB

## PARENTS/CARERS SUPPORT GROUP



For parents/carers who are supporting a child or young person with any kind of emotional or mental health problem to include:

**ANXIETY  
LOW MOOD  
SELF HARM**

**SLEEP PROBLEMS  
SUICIDAL THOUGHTS  
EMOTIONAL DIFFICULTIES**

We hold monthly meetings for parents/carers to come together to share their experiences, as well as gaining information and support.

The aim of this group is help you feel that you are not alone in this climb to get the help and support your child needs.

Come along and meet parents/carers in similar situations. There will be a fantastic selection of:

**Practical tips to help you  
& your child**

**Guest speakers**

**Chance to talk**

**Lots of tea, coffee & biscuits!**



**NO NEED TO  
BOOK  
PLEASE COME &  
DROP IN**



For more information contact Compass Be on

 [info.barnsleyMHST@COMPASS-UK.ORG](mailto:info.barnsleyMHST@COMPASS-UK.ORG)

**address:  
HOME, Wellington House,  
Market Street, Barnsley,  
S70 1WA**



COMPASS BE

# THE CLIMB

PARENTS/CARERS SUPPORT GROUP



## Meeting Dates

**THURSDAYS 9:45AM – 12PM**

### 2026 Dates

5th February 2026

5th March 2026

2nd April 2026

7th May 2026

4th June 2026

2nd July 2026

3rd September 2026

1st October 2026

5th November 2026

3rd December 2026



**NO NEED TO**  
**BOOK**  
**PLEASE COME &**  
**DROP IN**

**Address: HOME, Wellington  
House, Market Street,  
Barnsley, S70 1WA**



For more information contact Compass Be on



[info.barnsleyMHST@COMPASS-UK.ORG](mailto:info.barnsleyMHST@COMPASS-UK.ORG)