

Newstead Academy 2024-2025 Monthly Newsletter 31.01.25

INSET Day

At Hunningley we have one Inset Day remaining that has not previously been given. This is due to the start date for pupils this academic year. The school opened for pupils on the 9th September - the previous week the school was closed, as the provision was brand new, so that we could ensure it was ready for pupils. These dates were not counted as Inset Days.

This Inset Day will be Friday 28th February. On this day school will be closed to all pupils as staff will be involved in a training day. We will notify transport of this date and that transport will not be needed. Please do contact us if you have any questions.

Playground

We have made some improvements to our playground and our pupils have enjoyed exploring the new equipment. Due to the wintery conditions your child may have come home a little muddy recently! Rest assured they have enjoyed themselves. Please feel free to send in wellies or spare clothing if you wish to.

PBS Plans

This term we have been creating new personalised Positive Behaviour Support (PBS) plans for all our pupils to enable us to support them in the most appropriate ways. We are keen to build on your knowledge of your child and ensure you have been given the opportunity to contribute to these plans. Thank you to those who have responded. Your child's class teacher will be sending the PBS plans home for you to check and sign before the end of this half term. If you would like to add further details to the PBS plan, please feel free to amend them as appropriate and return them to school.

Sleep Support

Please see the attached flyer from Barnsley Family Hubs with regards to their offer in relation to sleep support. You can follow the QR link if you would like more information.



Does your child have problems sleeping?

Across Barnsley, we have a range of different services to support you and your family. Check out what's on offer for parents and carers with children aged 1-18 years.



Contact Details

Tel: 01924967611

Email: theaton@watertonacademytrust.org

Email: swainwright@watertonacademytrust.org



News from Our Hives

Simon's Hive

A belated Happy New Year from Simon's Hive! Since Christmas we have been studying the Anglo Saxons and Vikings, looking at how vicious the Vikings were, but also how clever they were. We have made a Saxon house (after watching the professionals demonstrate), looked at the legend of Arthur and found out why King Arthur was Great!

In English we have been writing sentences and paragraphs to describe pictures, and we will be moving on to writing letters to the 'Demon Dentist'. Some of our children are looking at their phonics in reading whilst others are enjoying reading for pleasure and completing comprehensions. We are now studying fractions in Maths, ranging from finding halves to looking at fractions of quantities.

In addition to this, we are continuing to build good relationships by interacting with each other during Dough Disco, Music Interaction and using social stories.

Our work continues to improve and the children impress us every day.

Lewis's Hive

This half term we have been having lots of fun with our new topic, exploring the starry night sky. In this topic we have really enjoyed investigating animals that come out at night when we are asleep. We have been investigating what these animals look like and what adaptations they have which make them special. We really enjoyed turning the lights off in the classroom and using torches to find these animals when our teacher hid them around the room.

We have also looked at dark and light. We especially enjoyed using silhouettes to invent our own stories! We used torches on the silhouettes in a dark room to make a large shadowy character for our story. Our teacher also had a surprise for us and brought in a night sky projector which we used to project the

night sky onto the ceiling on our classroom. This was amazing because we got to lay on beanbags and look up at the starry sky.

In RE this half term, we have loved learning about Chinese New Year. We learnt that it is the year of the snake, and our teacher showed us how to make a 3D model of a swirling snake that we got to design any way we wanted to. We also looked at Chinese lanterns and why they are so important. We really enjoyed making our Chinese lanterns, which we hung up in the classroom. The last thing we did was talk about wishes. We looked at what a wish is. We loved telling our teacher our wishes, which he hung up on a Lam Tsuen (Chinese wishing tree).

School Diary Dates

Half Term Break

Monday 17th February 2025

Friday 21st February 2025

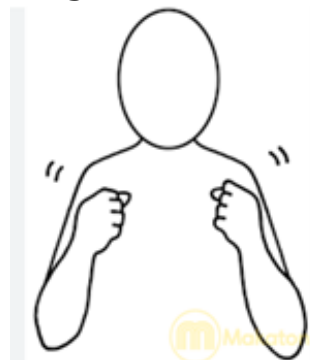
Return to School

24th February 2025

INSET Day

28th February 2025

Sign of the Month



winter

