

Newstead Academy 2024-2025 Monthly Newsletter 23.05.25

Parent Survey

Thank you to those of you who have already completed the parent survey. We are keen to find out how we can improve our school and value your views on how we currently work to support your child. Please could you take a moment to complete the survey by following the link here:

<https://forms.office.com/e/HKmCcYPTRq>

Alternatively, you can use the QR code below:



If you could please submit your response by Friday 30th May that would be appreciated.

Spare Clothing Request

As we continue to support all of our pupils with spare uniform when needed, we have noticed our supplies are running very low. We kindly ask that any borrowed uniform items be returned as soon as possible, so we can ensure they are available for others who may need them.

If you happen to have any outgrown or unused school uniform items at home, we would be incredibly grateful for any donations. Every shirt, jumper, and pair of trousers helps us provide comfort, consistency, and confidence for our pupils.

Your generosity really does make a difference. Thank you for your continued support!



Contact Details

Tel: 01924967611

Email: NewsteadSEND.Office@watertonacademytrust.org

Email: swainwright@watertonacademytrust.org



News from Our Hives

Simon's Hive

This half term we have been studying volcanoes, earthquakes and tsunamis in our topic work. The children will be able to tell you everything about stratovolcanoes, shield volcanoes and cinder cone volcanoes; how they've been formed and how they erupt. We have learnt about the layers of the earth and how a volcano can be formed. This has been transferred into their writing where all of the children have written an explanation text about volcanoes.

In our maths we have been studying 2D and 3D shapes and how they can be recognised by their properties. We have also looked at co-ordinates and turning clockwise.

We have had a great half term!

Lewis's Hive

This half term in Hive 2 we have been looking at all things summer and sunshine. This topic involved us going on minibeast hunts, making scientific predictions and looking at famous artists like Van Gough and Wassily Kandinsky, specifically looking at pictures involving flowers. We have explored life cycles of plants, where we planted sunflower seeds and cared for them for four weeks. We have explored life cycles of butterflies in a practical and sensory way. Building visual representations of each of the four key stages of a butterfly's life, and exploring the key physical changes that occur at these times.

We have also taken big steps in our Phonics. All of us have learnt lots of different sounds and progressed into different phases of the Little Wandle

phonics programme. In maths we have been focusing on place value within 20.

We have focused on the value of each number looking specifically at the ones and tens in a given number. We have also been adding and subtracting numbers within 20.

A new scheme we implemented this half term is Drawing Club. We love Drawing Club! Drawing Club is a time of day where we come together and look at stories, fairy tales and cartoons. We talk about these and draw key characters or environments. We then create our own code which changes our pictures. We have learnt lots of different words and have had lots of fun in these sessions.

School Diary Dates

May Half-Term Break

Monday 26th May 2025

Friday 30th May 2025

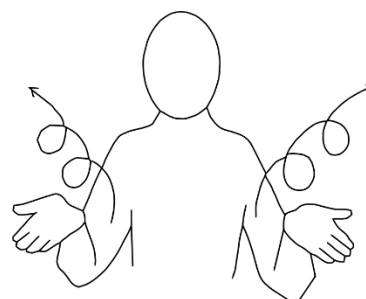
Summer Break

Last day of term 18th July 2025

Bank Holiday

Monday 26th May

Sign of the Month



Play

